



SHELTERS

CATALOG | 2023

«M-SHELTER» MODULAR SHELTER WITH STANDING SEAM CONNECTION

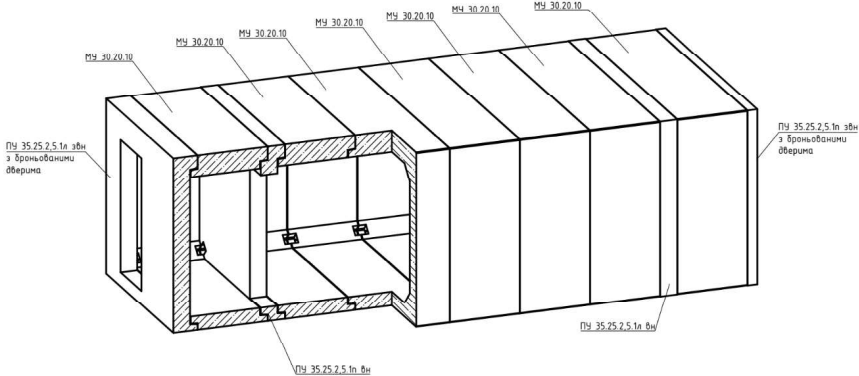
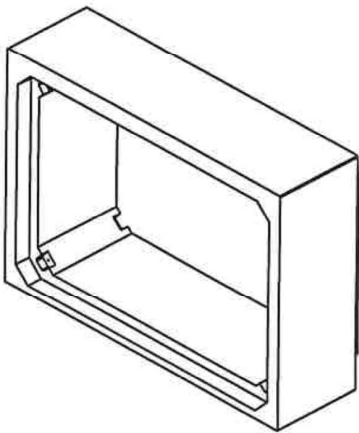
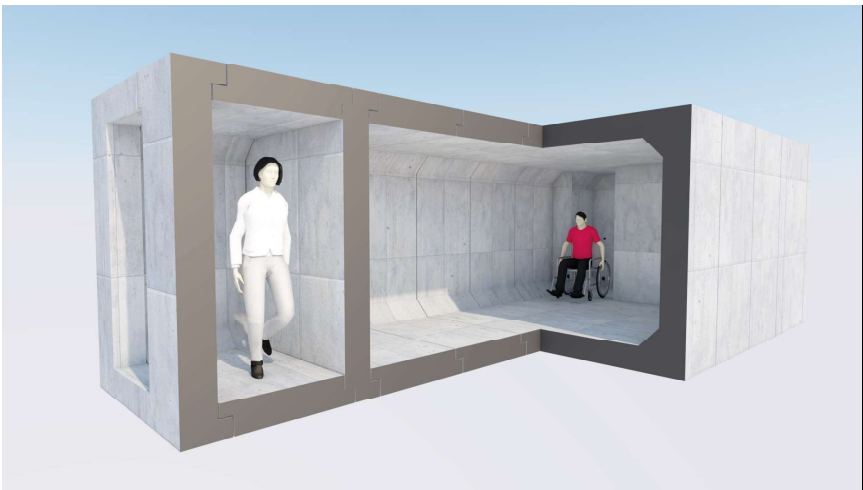
Shelters of this design can withstand an overpressure of less than or equal to 300 kPa in an explosion without destruction, overturning or other significant movement.
The degree of radiation exposure mitigation is 34.8.
The modular shelter meets the established requirements, which ensures the level of protection for a Class A-II shelter in accordance with Table 1 of Annex 1 of DBN B.2.2-5-97 (Conclusion of the SES of Ukraine dated 2023).

Elements

The prefabricated shelter is designed to protect people from airborne shock waves and ammunition fragments.
The shelter structure is assembled from precast concrete elements: a shelter module and shelter slabs.

Technical characteristics of the element :

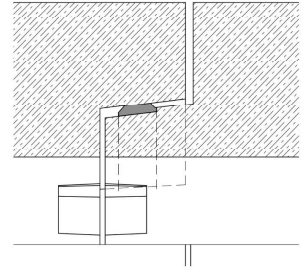
- Usable area : 3 m.sq (5 persons)
- Concrete class : C32/40
- Frost resistance: F200
- Internal dimensions:
 - height 2 m.
 - width 3 m.



Item	Width mm		Height mm		Length mm	Thickness mm	Weight kg
	Internal B	Outer B	Internal H	Outer H			
МШ 30.20.10	3000	3500	2000	2500	1010	250	7000
ПШ 35.25.2.5	3000		2000	2500			

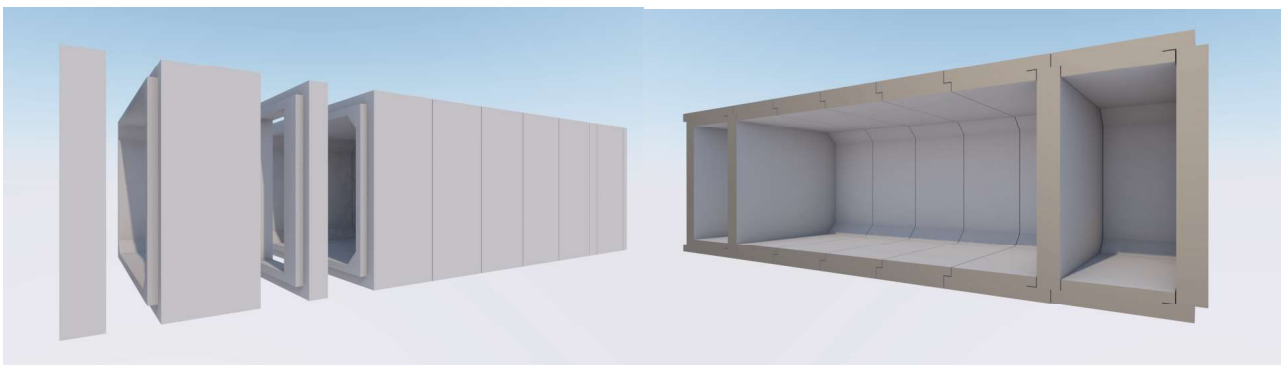
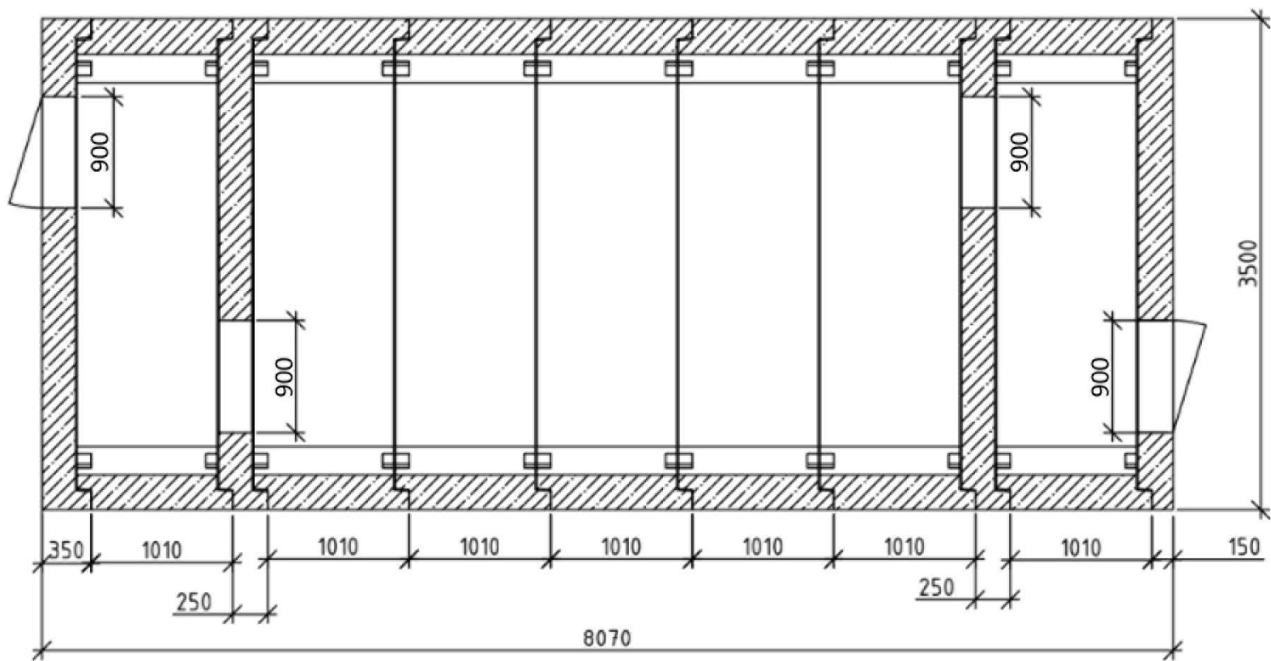
Airtightness

The elements are sealed together with a rubber seal.



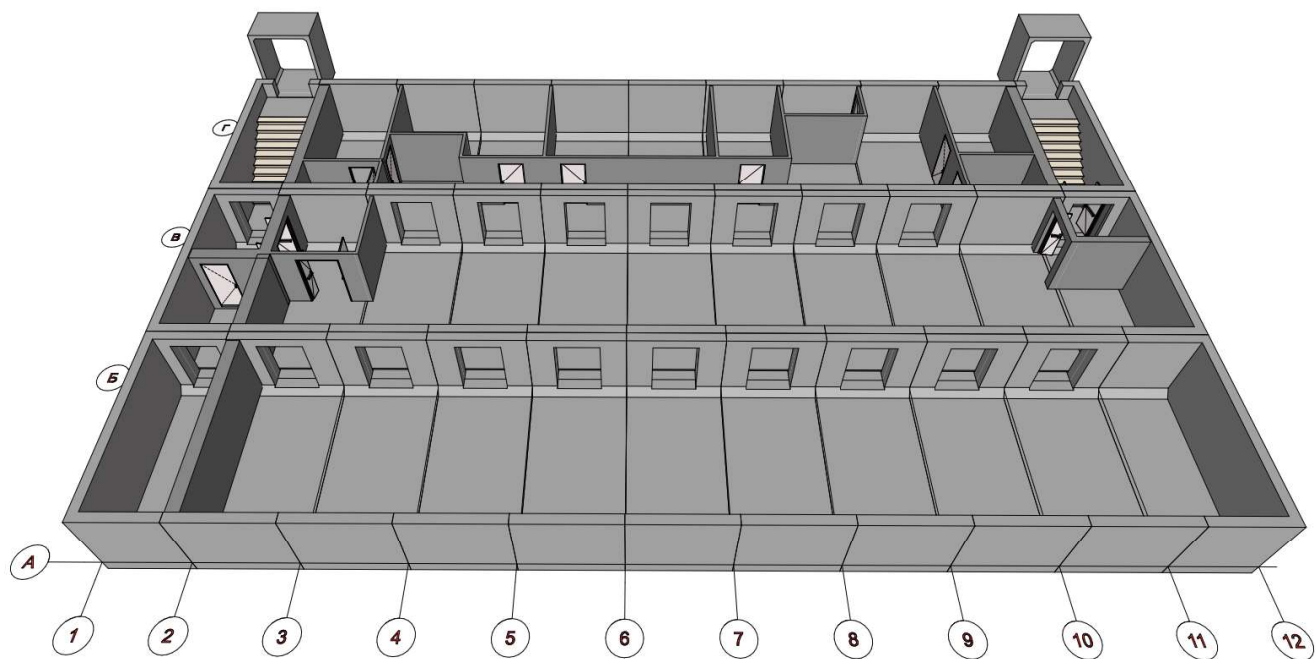
Plan

According to the requirements, the estimated number of people is 5, which is 0.6 square meters per person. Due to the modular design, the required area for hiding can be for any required number of people.



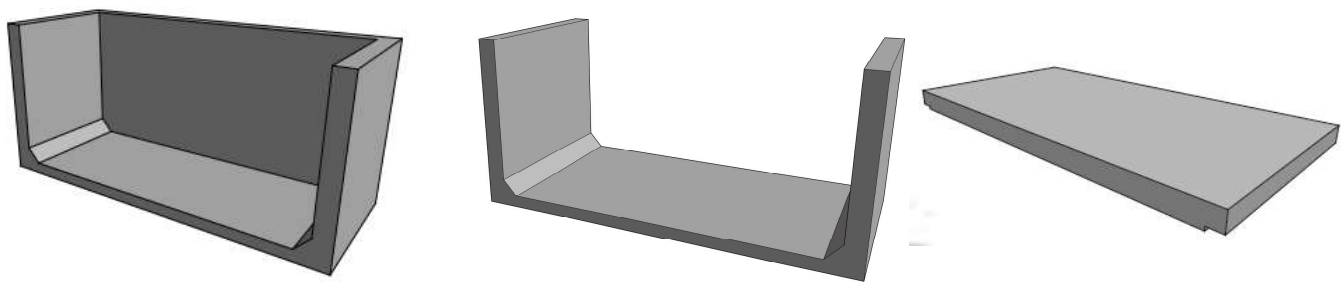
U-SHELTER

The shelter is designed to protect people from airborne shock waves, hazardous chemicals, radioactive substances, chemical warfare agents, bacterial agents, external ionizing radiation, and ammunition fragments.

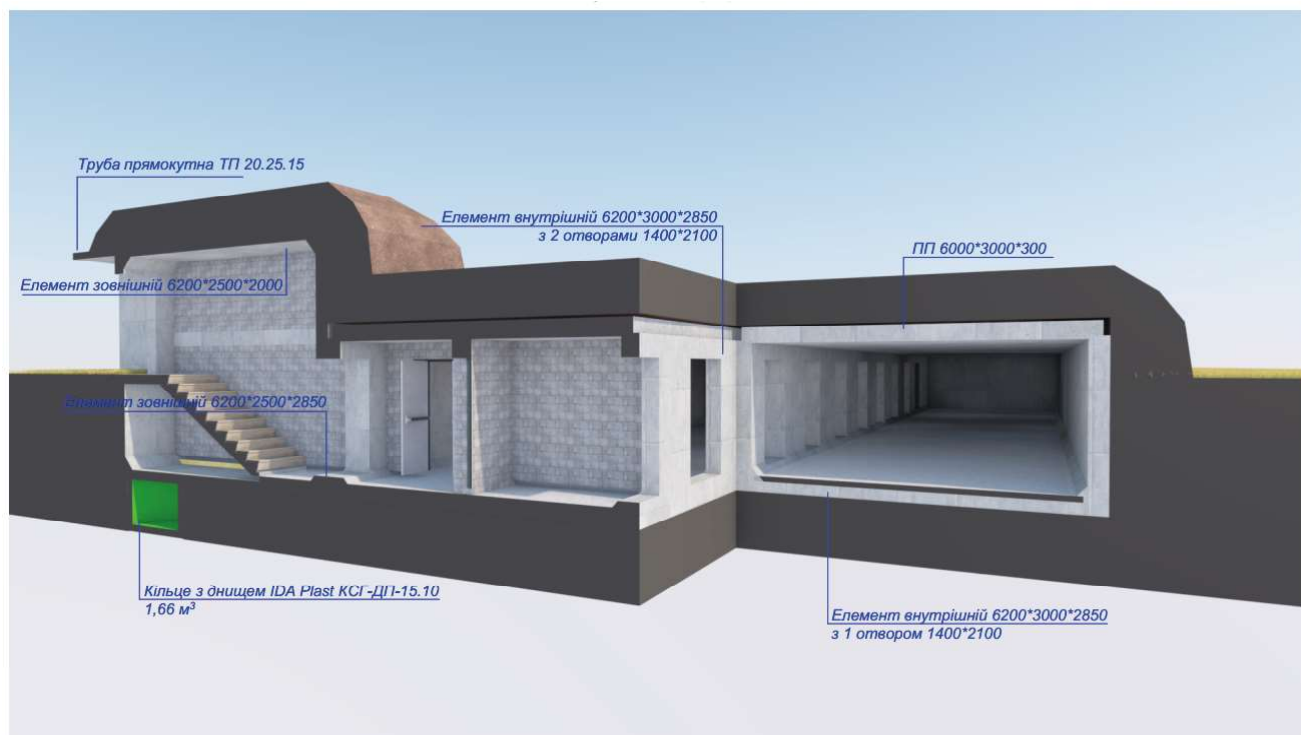


Elements

The elements are manufactured at the manufacturer's plant and delivered to the construction site by low-bed trucks. The shelter structure is assembled from precast concrete elements consisting of external elements that form the beginning and end of the structure, internal elements and corresponding floor slabs.

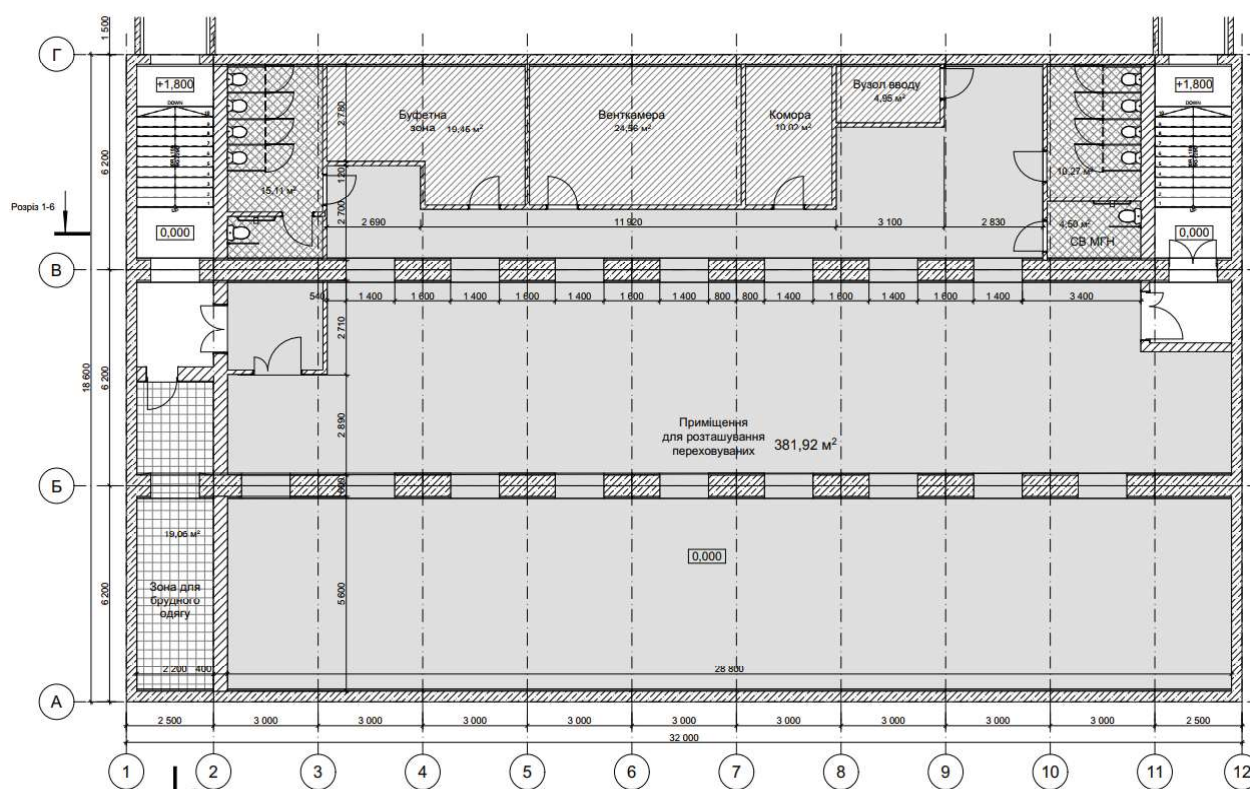


Item	Width mm		Height mm		Length mm	Thickness mm	Weight kg
	Internal B	Outer B	Internal H	Outer H			
U-Shelter MB-62-**-**	5600	6200	min 1050 max 3050	min 1350 max 3250	2500	300	16100
					2700		19200
					3000		
U-Shelter M3-62-**-**	5600				2500		23800
					3000		
Ab Tank-M PMП-60-**-**	5600		300	300	2500	300	11300
					3000		13800



Plan

Due to the modular design, the required area for hiding can be for any required number of hiding places



A STRONG PARTNER **IN CONSTRUCTION**

WWW.ABETON.UA

5 RODYNY BUNGE ST.,
KYIV, UKRAINE, 03134
TEL. +380 44 355 06 06
INFO@ABETON.UA



DOWNLOAD THE ABETON WATER SUPPLY AND
SEWERAGE CATALOG IN PDF FORMAT